

Dual Color, Wide Format Print

DC108



- Dual Color TIJ 4.0 Print Technology
- 4.25" to 8.5" Print Height
- 1200 dpi Print Quality
- Advanced Micro-Recirculation
- Auto Switching Dual Bulks
- Reduced Operator Intervention

TIJ4.0 for Higher Speed, Taller Print Applications

The DC108 is engineered for wider-width, high-volume printing applications that require single or dual-color output at superior resolution. Powered by TIJ 4.0 technology, it delivers a maximum print width of 8.5 inches (216 mm) with a native resolution of 600 dpi. Capable of throughput speeds up to 600 feet per minute at 600 x 600 dpi, the DC108 combines productivity with precision. Its advanced printheads leverage HP's micro-recirculation technology, significantly reducing decap issues and minimizing maintenance requirements to ensure consistent, uninterrupted performance.

The DC108 is designed for easy integration into almost any production line, suitable for Mail, Graphics and Packaging applications.

Advanced Print Technology

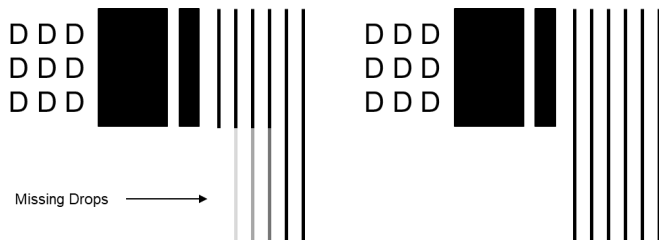
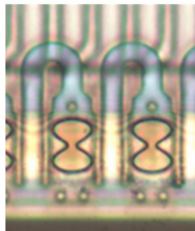
DC108, powered by the latest HP TIJ 4.0 technology, a revolutionary advancement generations ahead of competing coding technologies. Engineered for Bulk ink operations, the DC108 ensures maximum reliability, unmatched uptime, and significantly reduced ink costs.

Dual-color capability: Each printhead integrates two independent ink supplies, enabling true two-color output in one pass. This provides high-contrast branding or compliance highlights without the complexity of multi-head alignment, and each channel can be swapped independently to minimize downtime.



Micro-Recirculation

Micro-recirculation methodology used in the DC108 print heads addresses the issue of ink drying out when the heads are not in use for either short or long periods. This approach minimizes print head maintenance and decap issues, making it an ideal solution for production processes that involve frequent starts and stops.



Without Micro-Recirculation

With Micro-Recirculation

Stunning Print Quality

Designed to provide outstanding print quality for a wide range of printing needs, it is capable of producing high-definition, laser-sharp prints for alphanumeric characters, date codes, lot codes, graphics, barcodes, and more.



With a maximum print resolution of 600 dpi, the DC108 ensures that the printed content is clear, precise, and meets all labeling requirements, past, present and, very importantly, future.

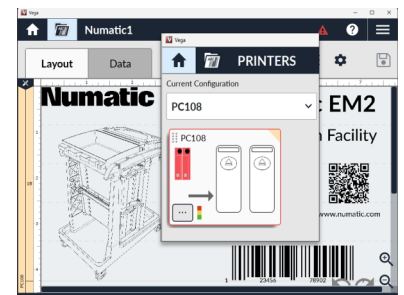
- Tall, seamless images
- Meets Future needs for high density, 2D Barcodes
- Variable Print Resolution up to 1200dpi
- Prints Vertically and Horizontally

Lowered Cost of Ownership

By using the dual 775ml Bulk Ink Cartridge for DC108, ink costs, operator intervention, and unplanned downtime are significantly reduced, directly impacting operating costs, and maximizing throughput at all times

Intuitive Software

Controlling the DC108 is done utilizing the Norwix enterprise-level Vega software. Its extremely powerful, intuitive, and simple-to-use interface makes it an obvious choice in any environment. It can quickly integrate into external systems, retrieving template data from remote databases and other packaging equipment.



Dual Color Capability for Evolving Requirements

3.0m Umbilical

Carries ink and electrical signals.

Dual 775ml Bulk Ink Supply

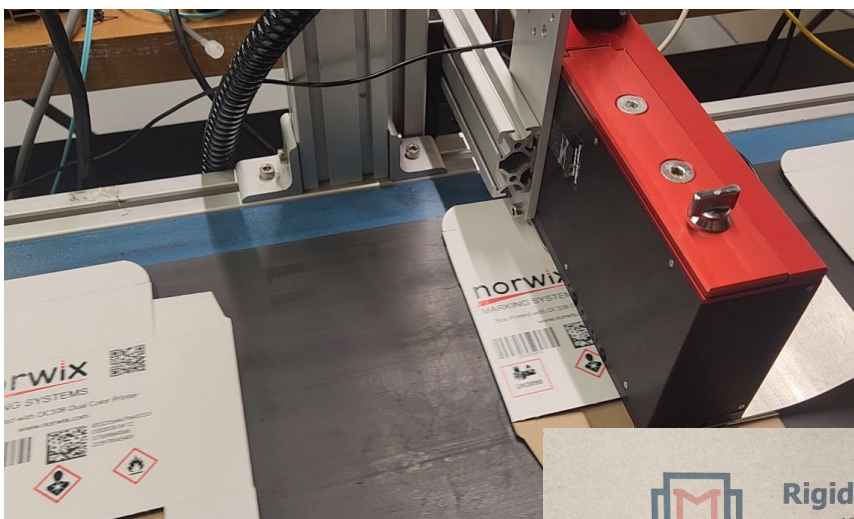
A large bulk capacity ensures minimal operational costs with little operator intervention. Changeover of the Bulk Cartridge takes only seconds.

DC108 Enclosure

Controller, with Daisy Chain, I/O port connectivity and capacity for two HP108 printheads.

Multiple Enclosures can be daisy chained together for wider print capability

108mm TIJ4.0 Printheads



DC108—Performance

| Horizontal Resolution (DPI) | Max Speed | |
|-----------------------------|-----------|-------|
| | ft/min | m/min |
| 600 | 300 | 91 |
| 1200 | 150 | 45 |

| Characteristic | DC108 |
|--------------------|-----------------------------|
| Print Width | 108mm—216mm |
| Maximum Resolution | 600 dpi |
| Drop Size | 7 pl |
| Jetting Frequency | 72 kHz |
| Throw Distance | Up to 7mm * |
| Nominal QD life | 15L (Application Dependent) |

* Print Speed Dependent

| | |
|----------------------|---|
| Printable Items | Lot Codes, Datecodes, Alphanumeric, Barcodes, Bitmaps, PDF |
| Barcode Printing | EAN-13/EAN 8, UPC-A, Code128, ITF-14, ITF-2of5, Code39, Cryptocode, GS1 Datamatrix, QR (114 barcode support included) |
| Print Density | User Configurable (12.5% - 100%) |
| Umbilical Length | 3m |
| Ink Types | Aqueous (Black and Spot Colors) |
| Bulk Solution | Dual 775ml Bulk Supply |
| Electrical Interface | Ethernet, I/O, Sensor, Encoder, Stack Light |
| Voltage | 115V to 240V |
| Languages | English, Spanish, German, French, Korean, Chinese, Portuguese |
| Data File Support | CSV, TXT, MDB, XLS, XLSX, ACCDB |
| Daisy Chain | Daisy Chain multiple to build larger systems |
| Communications | 1GB Ethernet |

